



FANUC FIELD system

FIELD system PMA (Production Monitoring & Analysis)



DESCRIPTION

FIELD system PMA is an application to monitor the operation of production equipment anytime. It collects the operation results of each production device including the operating time and alarm time and uses them for factor analysis.

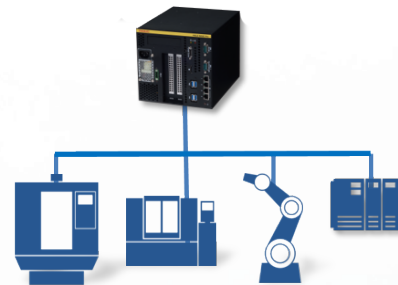
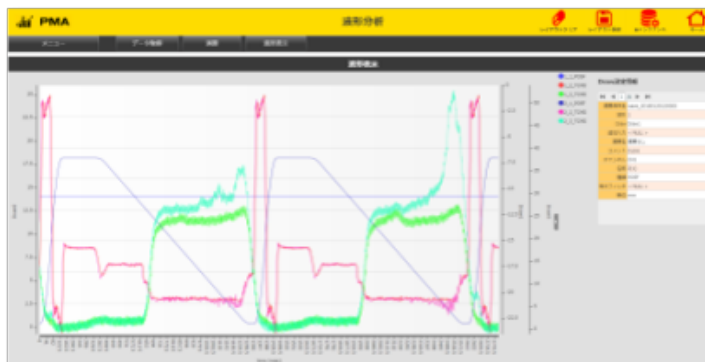
KEY BENEFIT

Improving the productivity by statistically analysing collected data and visualising tendencies and statuses with numerical values and graphs

KEY FEATURES

- Collects the operation results of each production device including the operating time and alarm time and uses them for factor analysis
- Information collection from equipment operation
- Bulk collection of high-speed data such as servo information from inside the controller
- Time-based analysis by superimposing multiple information
- Customisation of screen layout and skin
- Visualisation of point of change or changes over time when a problem occurs

APP PREVIEW



WWW.FANUC.EU