

Connection for measuring instruments



DESCRIPTION

The Connector uses the SMS (Smart Measuring System) developed by Mitutoyo for visualisation and utilisation of real-time data submitted by Mitutoyo CNC measuring machines or handheld measuring instruments.

Mitutoyo SMS enables data collecting and sharing between different applications, product & industrial worlds and purposes. The concept includes operational data, real-time measurement results or machine conditions. It also comprises the utilisation of those datasets for many other applications. This results in improved figures regarding availability, effective and projectable maintenance, accuracy and quality.

SMS by Mitutoyo is compliant to the various communication standards, like MTConnect, OPC UA, Ethernet, TCP/IP, CC-Link PROFINET which allows seamless connection with IoT platforms, machine tools, SCADA and other peripheral devices.

KEY BENEFITS

- Improved operating rates and easy maintenance
- Utilise data in various applications
- Streamlined quality control operations
- Improved availability, accuracy and quality
- Real time monitoring of machine status

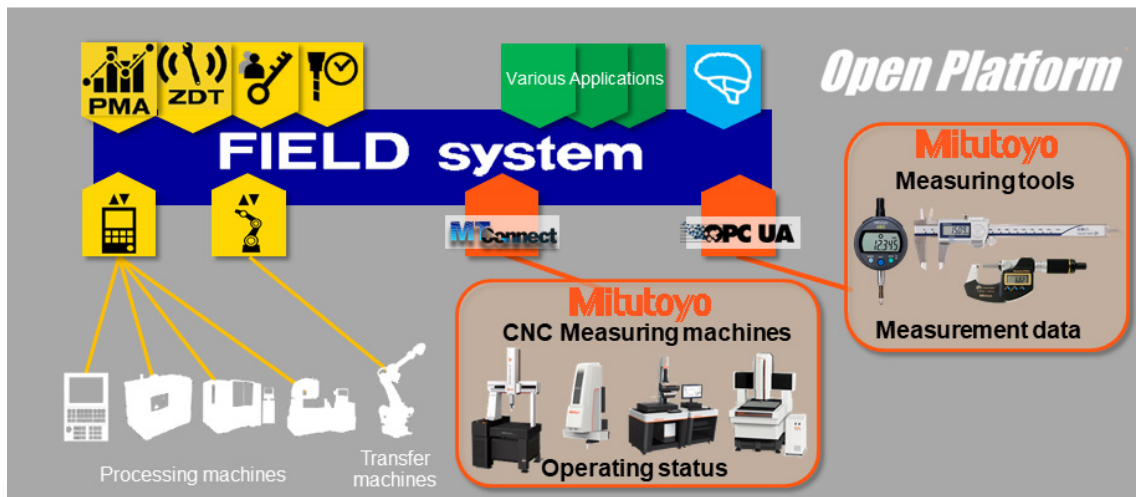
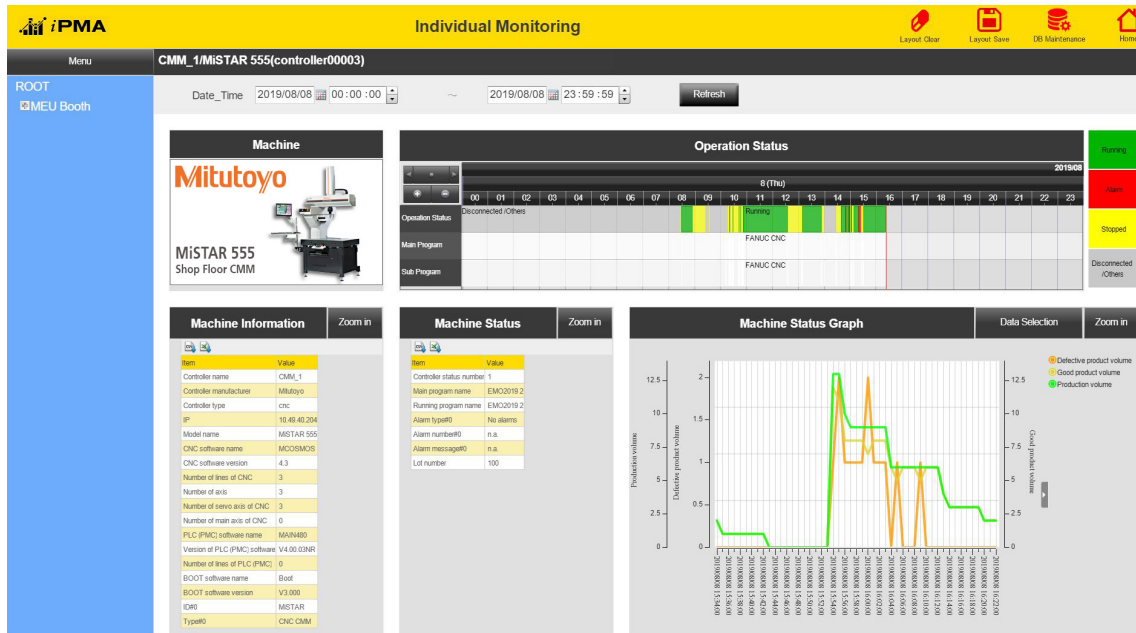
KEY FEATURES

- Bidirectional communication with FANUC FIELD system
- Enables submission of operating status, machine condition and measuring results of Mitutoyo measuring devices and CNC measuring machines, like: Characteristics, GO / NG Tolerances, Functional mode indicators, Program information, Machine part and state indicator, Planned and remaining repetitions, Measurement Values
- Supports real time data acquisition
- Compliant to various communication standards
- Enables processing and transfer of measurement and measurement tool & machine data across system boundaries
- Transmits measurement data wirelessly from measuring tools
- Enables various analyses by using accumulated measurement data

Connection for measuring instruments



APP PREVIEW



Contact Mitutoyo Europe GmbH

+49(0) 21 37 10 20

info@mitutoyo.eu

www.mitutoyo.eu



WWW.FANUC.EU