



FANUC FIELD system



FIELD system CNC Edit Log

DESCRIPTION

FIELD system CNC Edit Log is an application that allows logging and utilisation of the CNC program edit history.

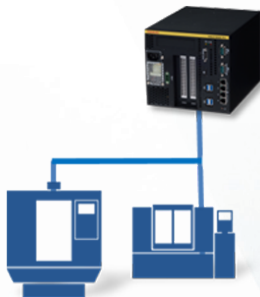
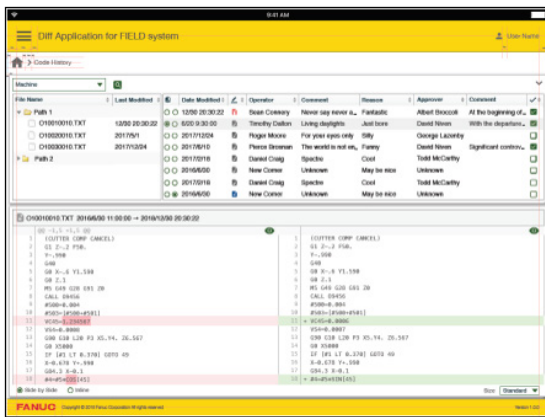
KEY BENEFITS

- Daily program back-up kept for future usage
- CNC edit history at hand for analysis
- Know who modified programs to understand easily the reasons
- Monitor production changes and history of failures

KEY FEATURES

- Identify users, approvers, editing reasons and editing errors
- Log and display edit history of CNC programs
- Log edit data such as who edited, what was edited, why and who approved
- Identify defect causes resulted from program change

APP PREVIEW



WWW.FANUC.EU