

Alascom Core



CONNECT



MONITOR



THINK



DRIVE

DESCRIPTION

The Alascom Core is a modular application to facilitate interfacing and monitoring of a plant and it is composed by many modules (APM, HoloFlex, NLPChat, ADM) that users can separately acquired. Alascom Core supports different devices like FANUC robot, FANUC CNC, PLC.

In basic mode user can access data from the plant using the APM (Alascom Plant Monitoring): a web based application that provides real time control of the monitored devices and of their history. Users can set up thresholds, select intervals of time and produce reports.

HoloFlex has been designed to enable augmented reality. User configure their own graphs and data is shown within a virtual dashboard compatible with Microsoft HoloLens. NLPChat has been designed to enrich our application with an AI able to understand user's speech to show graphics and reports. Users for instance can ask about alarms, production in a period of time, OEE and the information will be shown on the holographic HoloLens interface or on the web application.

ADM (Alascom Device Monitoring) is an interface designed for time-series data. With this app user can create simple analytics on their process data.

KEY BENEFITS

- Show real time data from devices
- Modularity
- Support operator with artificial intelligence based conversational agent
- Innovative interface based on augmented reality
- Availability
- Reporting
- Monitoring
- Customisation

KEY FEATURES

• AI technology:

Our application is equipped with an AI that understands what a user says to create a simple and intuitive communication with him / her

• Augmented reality:

The application supports Microsoft HoloLens to visualise on an holographic interface the devices connected in realtime for monitoring.

• Availability:

The application provides different frontend (web application, HoloLens, mobile app) to maximise easiness of use. The user can choose one of the above modes interchangeably.

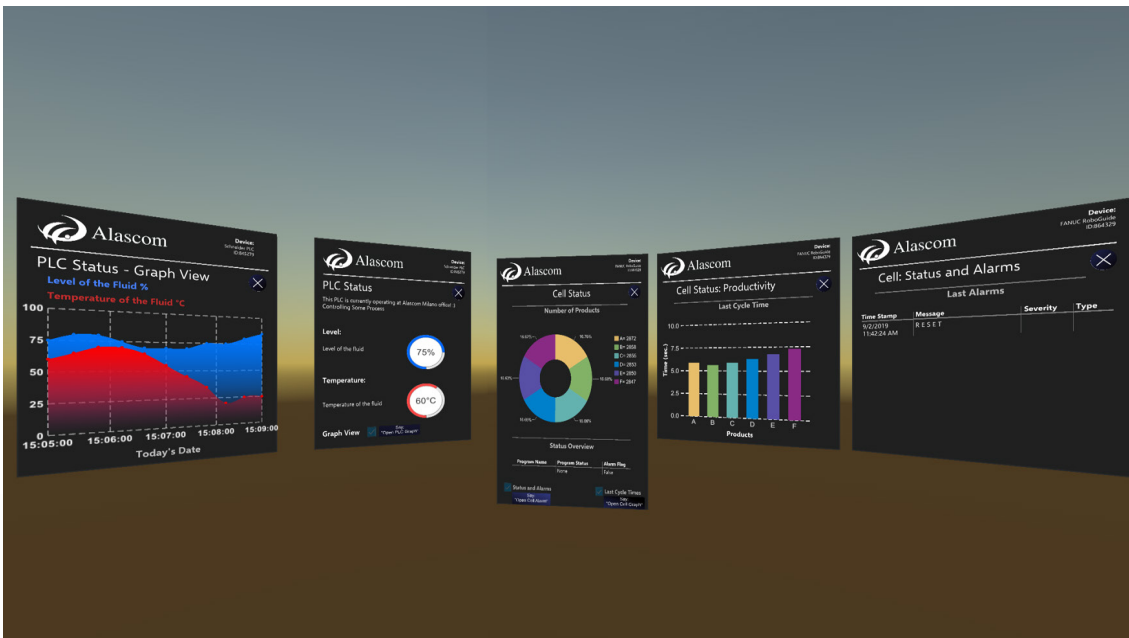
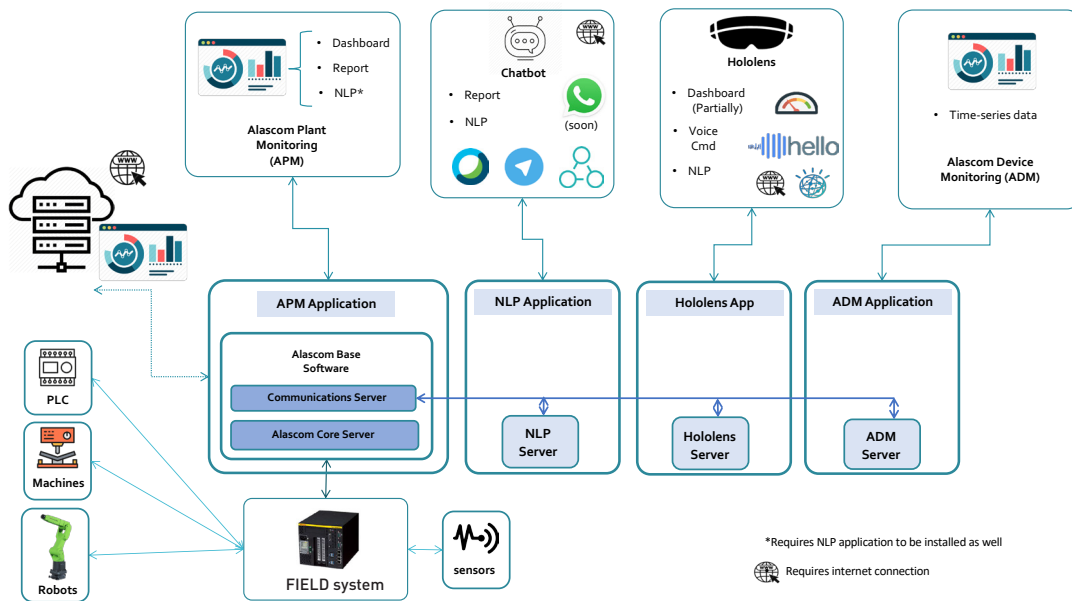
• Monitoring:

The connected devices are monitored in real time and the data is historicised for analysis and reporting. The system manages the consistency and availability of the data in a transparent way to the user. Reporting is created quickly and easily. It is sufficient to query in natural language the AI of the system to obtain complex reports.

• Modularity

The Alascom APM system consists of a Core and four modules: APM, HoloFlex, NLPChat, ADM which can be purchased separately. The base application provides a full set of functionalities for monitoring but its potential can be enriched with other application of Alascom ecosystem.

APP PREVIEW



Contact Alascom:

+39(0) 02 98128535

contact@alascom.it

www.alascom.it



WWW.FANUC.EU